

9 Plumtree Cottages, Shardlow, DE72 2HL

£699 PCM









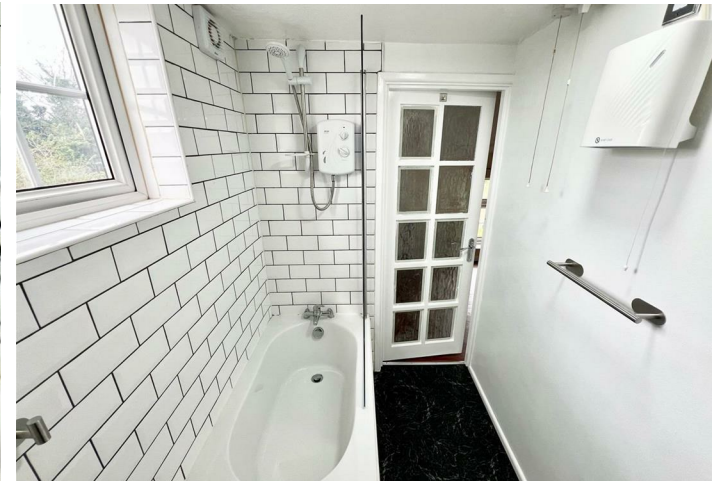
Nestled in the charming Plumtree Cottages, this delightful Georgian apartment offers a unique blend of character and modern convenience. With one spacious reception room, one well-appointed bedroom, and a stylish bathroom, this property is perfect for individuals or couples seeking a tranquil retreat.

The apartment boasts a lovely rural setting, providing a peaceful atmosphere while still being conveniently located. The close proximity to the River Trent allows for picturesque walks and outdoor activities, making it an ideal spot for nature enthusiasts. Furthermore, the excellent transport links to Nottingham, Derby, and Leicester ensure that you remain well-connected to urban amenities and attractions.

This property is a wonderful opportunity for those looking to embrace a serene lifestyle without sacrificing accessibility. Whether you are a first-time buyer or seeking a rental, this Georgian gem is sure to impress with its charm and convenient location. Don't miss the chance to make this delightful apartment your new home.

Available from September 2025.

Contact us now to arrange a viewing.



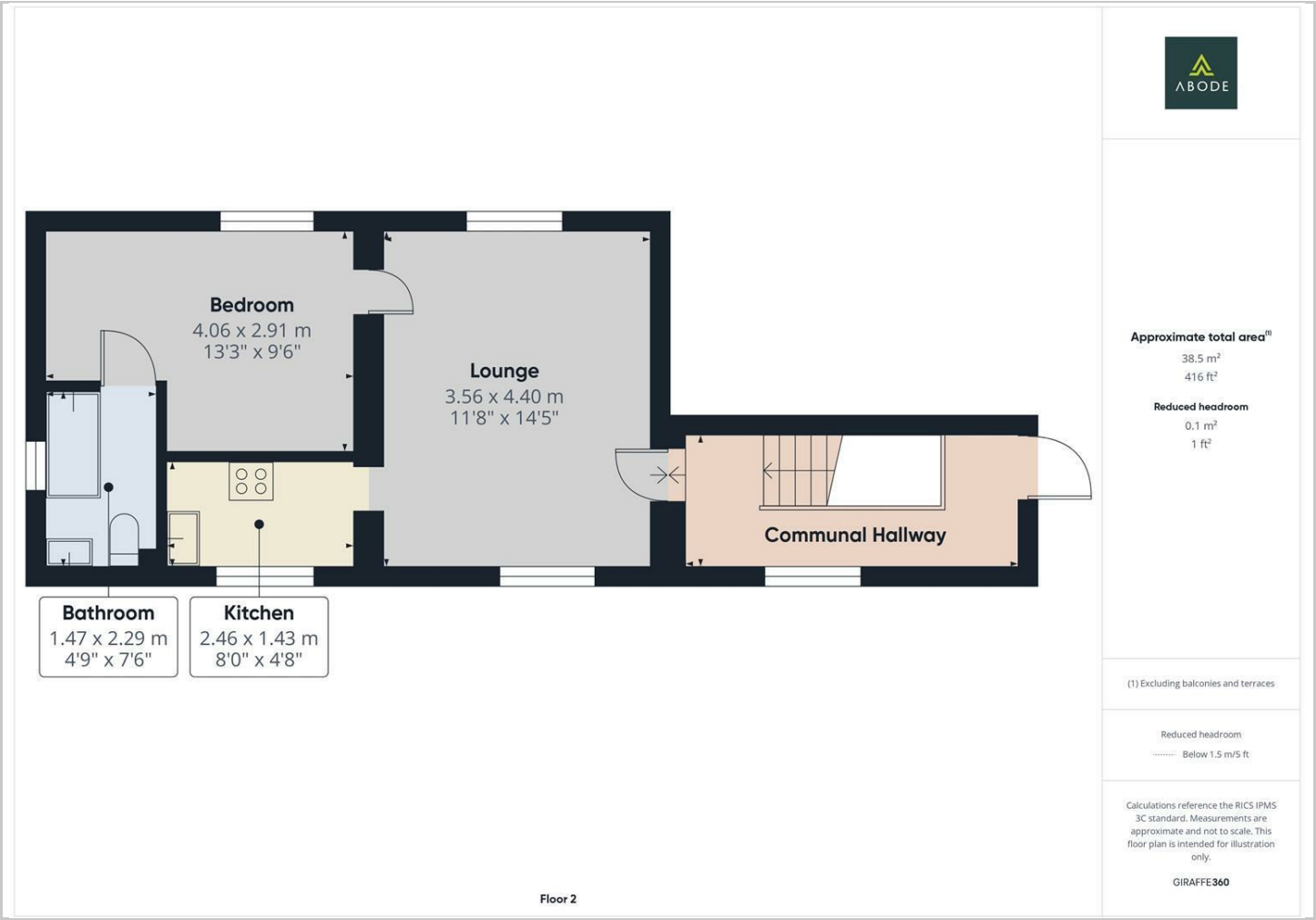




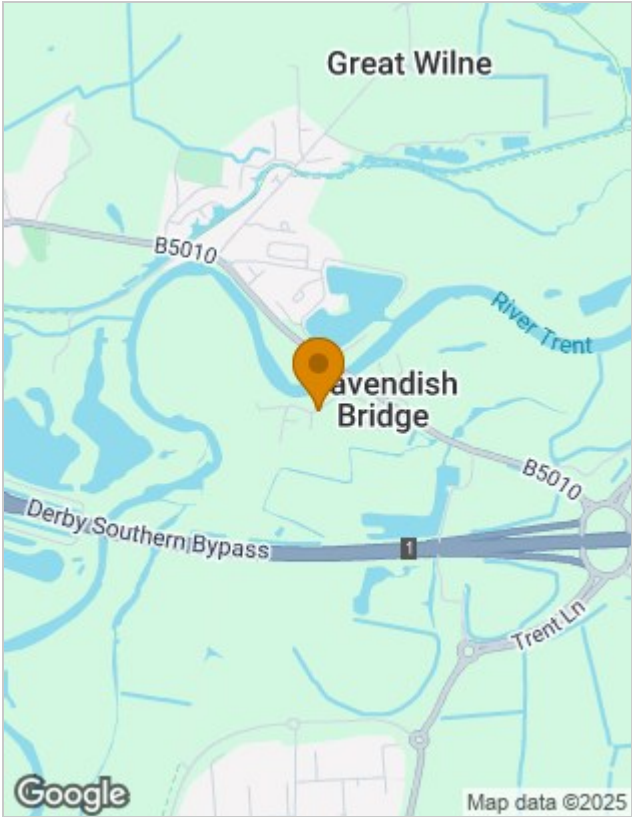




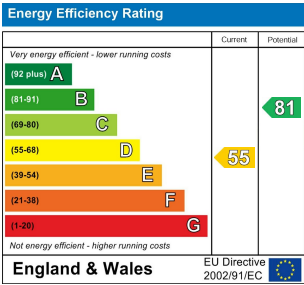
Floor Plans



Location Map



Energy Performance Graph



Please contact our Burton Lettings Office on 01283 845888 if you wish to arrange a viewing appointment for this property or require further information.

The particulars are set out as a general outline only for the guidance of intended purchasers or lessees, and do not constitute, any part of a contract. Nothing in these particulars shall be deemed to be a statement that the property is in good structural condition or otherwise nor that any of the services, appliances, equipment or facilities are in good working order. Purchasers should satisfy themselves of this prior to purchasing.